

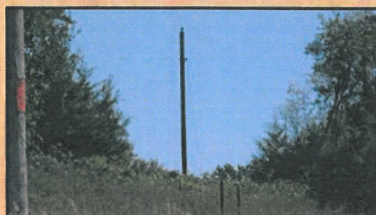
## Non-treated Right-of-Way

This non-treated right-of-way does not allow utility companies easy access for maintenance. Utility lines can ground through tall growing trees and shrubs, causing energy loss.



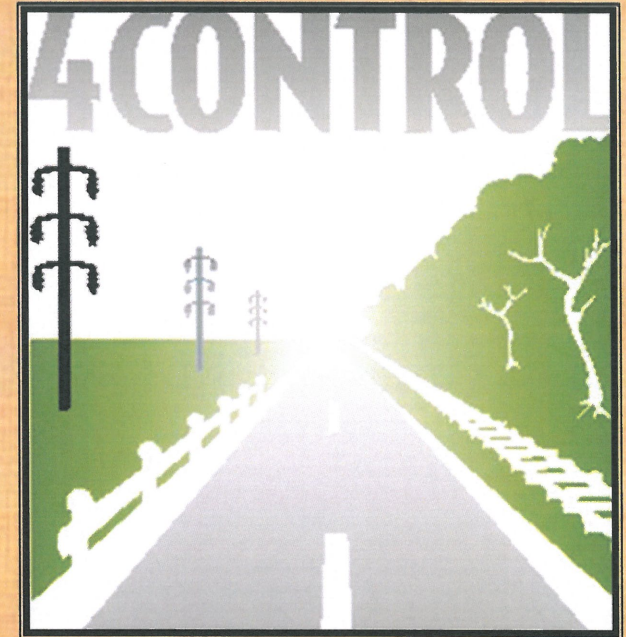
## Treated Right-of-Way

4 Control treats rights-of-way to provide utility companies easy access to the lines for maintenance. There is no energy loss through grounding in treated rights-of-way.



## 4 Control Customers

Clark Electric Cooperative  
Jump River Electric Cooperative  
Oakdale Electric Cooperative  
Riverland Energy Cooperative  
St. Croix Electric Cooperative  
Pierce Pepin Electric Cooperative  
Price Electric Cooperative



## Company Information

**Address:** 4 Control  
PO BOX 517  
Menomonie, WI 54751

**Owners:** Marion Shambeau  
Lee Shambeau

**E-mail:** marion@4-control.com  
lee@4-control.com

**Website:** [www.4-control.com](http://www.4-control.com)

**Telephone:** (715) 235-1124  
(888) 454-1124

**Fax:** (715) 235-4495

---

# Electrical Utility Right-of-Way Management

---

## What 4 Control Does

We use selective herbicides to control tall growing trees and shrubs in order to maintain safe rights-of-way under electrical utility lines.

## Advantages of Herbicide Use

### Cost Effective

Herbicide application requires less labor and equipment than mechanical methods such as mowing and cutting.

### Long Lasting Effects

Herbicide use offers residual effects (meaning retreatment is only needed every few years), whereas mechanical methods require more frequent attention.

The use of selective herbicides targets only unwanted plants. Desirable low-growing shrubs, grasses, and flowers are undisturbed. This prevents erosion and has been proven to enhance wildlife habitat within utility rights-of-way.

## Methods of Application

### Foliar

Herbicide application to leaves

### Basal

Herbicide application to bark

## Common Concerns with Herbicide Use

### Water Contamination

4 Control only uses herbicides approved for use by water while applying near water. Our treatments do not endanger surface or groundwater.

### Runoff to Crops

All of our applicators are licensed and trained on how to apply herbicides to keep non-target plants safe.

### Health Hazards to Animals

4 Control is concerned about your farm and pet animals. Once herbicides are dry, they pose minimal risk to your animals. We always mix according to the rates stated on the chemical product labels, and only use pasture approved chemical products when treating around farm animals. Whenever animals are present, we go out of our way to avoid applying herbicides near them.

### Overall Safety

All of the herbicides 4 Control uses are approved and registered for use by the Environmental Protection Agency (EPA). The National Regulatory Authority ensures all herbicides are thoroughly tested and meet strict guidelines. They are safe to use and do not pose any unreasonable adverse effects to human health or the environment.

## Our Equipment

All of 4 Control's equipment is specialized for our line of work. Our fleet includes four-wheelers, Pugs, a Gator, and Hummers. Each vehicle is equipped with a tank from which herbicide is sprayed. We also have support vehicles and trailers for storage and transportation of workers and equipment.

